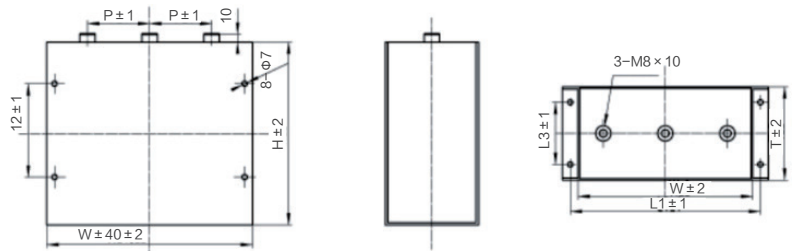
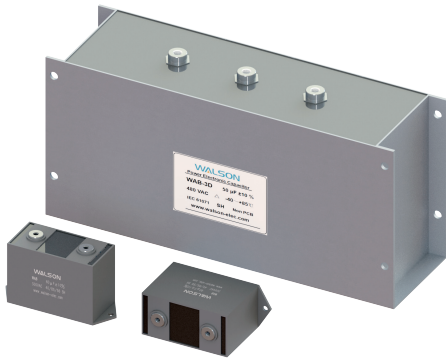


WAB 干式交流滤波电容器 (矩形外壳)

Dry Type AC Filter Capacitor for Power Electronics (Rectangle case)

外形图 Outline Drawing

安装方式, 可根据客户实际使用尺寸, 及其它相关参数进行定制。
The installation method can be customized according to the customer's actual size and other related parameters.



单位 Unit: mm

特点 Features

- 金属或塑料外壳封装, 高温高热导灌封料填充
- 铜螺母或螺栓引出, 安装方便
- 容值高, 体积小, 高耐压水平, 自愈性强
- 大纹波电流, DV/DT承受能力强
- Metal or plastic enclosure package, filled with high-temperature and high heat-conductive material
- Copper nut or screw bolt lead out, installation is simple and convenient
- High capacitance, small size, high pressure level, self healing
- Large ripple current, DV/DT bearing capacity

主要用途 Typical Applications

- 广泛应用于电力电子设备中作交流滤波用
- 在大功率UPS, 开关电源, 变频器等设备中作交流滤波, 治理谐波及提高功率因数
- Widely used in power electronic equipment used for the AC filter
- In the high-power UPS, switching power supply, inverter and other equipment for the AC filter, harmonics control and improve power factor

技术要求 Specifications

执行标准 Implemented Standard	GB/T 17702、IEC 61071
气候等级 Climatic Category	40/85/56
额定电压 Rated Voltage	400V.DC~1200V.DC
容量范围 Capacitance Range	3 × 20~3 × 500 μ F / 50 ~ 1500 μ F
容量偏差 Capacitance Tolerance	± 5% (J) , ± 10% (K)
极间耐压 Voltage Test Between Terminals	2.15Un (VAC) /10S
极壳耐压 Voltage test between terminals and case	1000+2 × Un/√2V.AC 60S
绝缘电阻 Insulation resistance	≥ 10000 s (100 V , 1 min , 20 °C)
放电电阻 Discharge Resistance	Discharge to 75V or below within 3 minutes

■ 规格参数 Specification Parameter

C _N (μF)	Dimension (mm)				ESL (nH)	ESR (mΩ)	DV/DT (V/μs)	I _{pk} (A)	I _{max} (A)	R _{th} (K/W)
	W	T	H	P						
Un 400~450V.AC										
3×200	225	120	170	80	62	2	50	10000	3×70	1.11
3×300	225	120	235	80	78	1.85	40	12000	3×85	0.86
3×400	295	120	235	80	80	1.5	35	14000	3×120	0.71
3×500	365	120	235	80	85	1	30	15000	3×140	0.6
Un 500V.AC										
3×120	225	120	170	80	62	2.5	60	7200	3×50	1.12
3×180	225	120	235	80	78	2.2	50	9000	3×70	0.86
3×240	295	120	235	80	80	1.9	45	10800	3×100	0.71
3×300	365	120	235	80	85	1.8	40	12000	3×120	0.6
Un 690V.AC										
3×50	225	120	170	80	62	5	100	5000	3×50	1.11
3×75	225	120	235	80	78	3.5	90	6750	3×70	0.86
3×100	295	120	235	80	80	2.5	80	8000	3×100	0.71
3×125	365	120	235	80	85	2.3	80	10000	3×120	0.6
Un 1140V.AC										
3×42	340	175	200	80	71	5	120	5040	3×80	0.61
3×60	420	120	25	80	88	1.85	100	6000	3×100	0.53